

# BRUSH PLATING

## Getting to Where the Gouges Are

*Wear and sea air had taken its toll on the plating on the plunger of this shipboard conveyor cylinder.*

**Brush Plating -**  
*Economically repairs and resizes damaged or mis-machined parts. The accuracy of precision metal deposition builds up and returns worn parts to exact specifications. The process can replace machining. Completely portable process gets you back to work fast.*



## THE PROBLEM

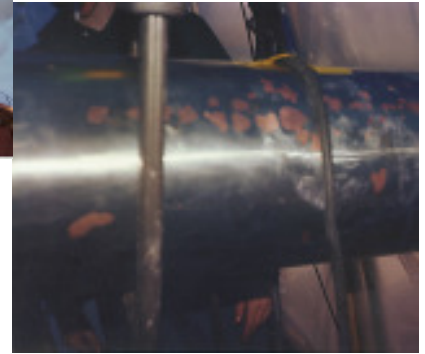
Lufting cylinder was located 60' above the main deck of this ore carrier for off-loading. Surface plating and gouges -- some as deep as 1/2" were found on the ram OD, resulting in tears to the seal. Standard procedure is to remove the cylinder for repair. To cut time and money, Metal Surgery decided to work on the cylinder in place. Work has started on the scaffolding platform for the repair to reach the cylinder 60' above the ore carrier's main deck.



## THE FIX



Suspended heated house built around the cylinder enabled crew to work in sub-zero weather. Copper plating was applied to the damaged areas of the cylinder.



Copper areas are hand finished and then flashed with nickel tungsten to acquire hardness.

## THE RESULTS

The cylinder is restored to factory specs with no disassembly required.



## METAL SURGERY, MILW. Ltd.

182 W. Oklahoma Ave. Bldg #23  
Milwaukee, WI 53207  
(414) 744-8313 Fax: (414) 744-8770

Web Site: [www.metalsurgery.com](http://www.metalsurgery.com)

The **Get-It-Done** Professionals in World-Wide Repair